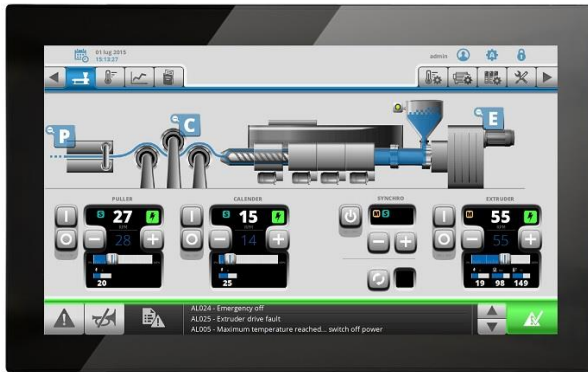


eX721

21.5" TFT color with multitouch projected capacitive touchscreen. 3 Ethernet ports, 1 serial port, 2 USB ports. JMobile runtime.



- 21.5" TFT color display, resolution 1920x1080 pixel, 16M colors. Dimmable LED backlight
- Projected capacitive touchscreen. True glass design. Multitouch operation
- 3 Ethernet ports
- SD Card slot
- 2 Plug-in modules for system expansion

Product overview

eX Series 700 HMI products combine state-of-the-art connectivity features and top performance in a great design. Products have been designed as IoT edge devices with the combination of a powerful controller with networking capability and outstanding communication options including client/server OPC UA. They are the ideal choice for all demanding IoT edge applications in factory, marine and building automation.

The glass projected capacitive touchscreen and the brilliant 21.5" widescreen display with resolution of 1920x1080 guarantee great optical performance; with the support of multitouch gesture programming they can create the most natural human interfaces.

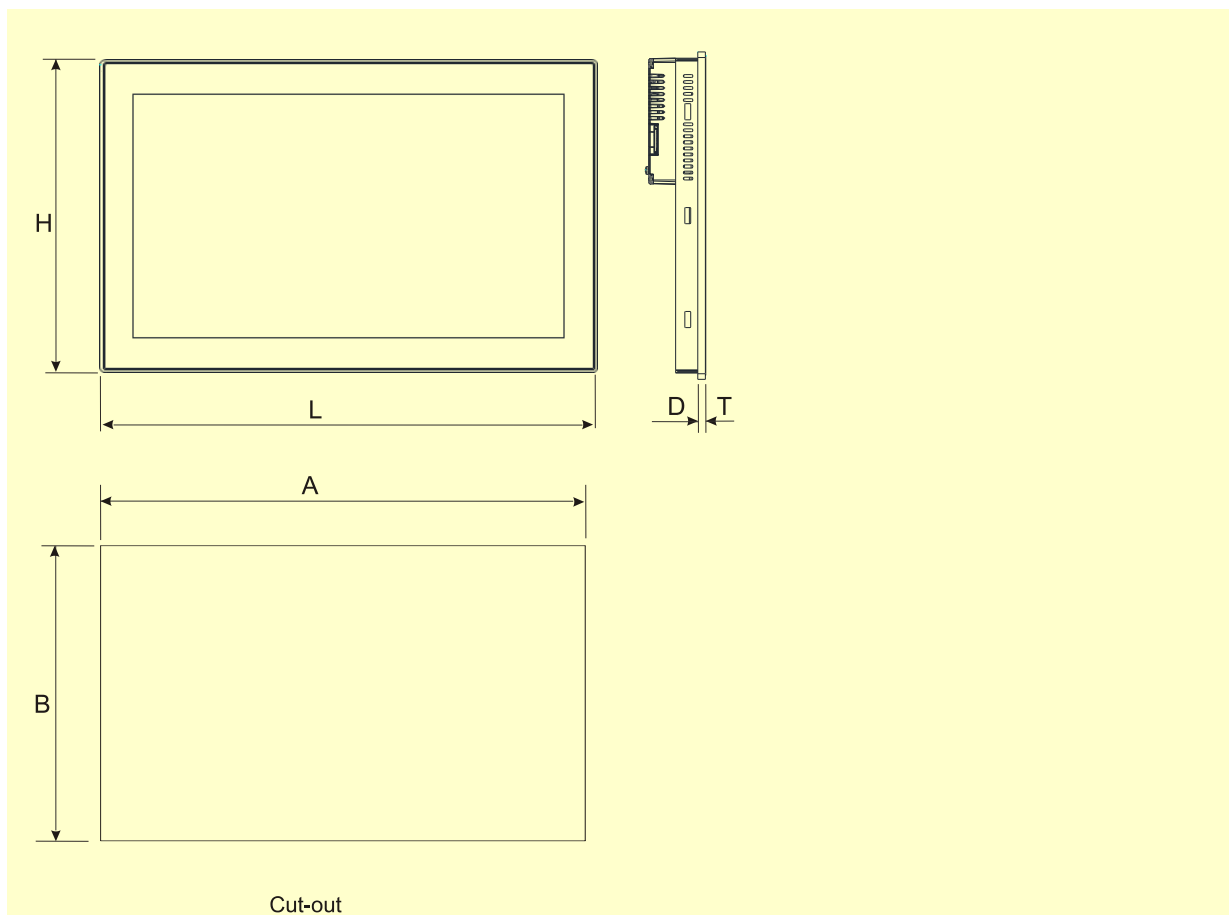
eX Series 700 HMI products have been designed to run the JMobile software.

- JMobile runtime included.
- Requires JMobile V2.5 or higher.
- Supports JMcloud secure connectivity with full network separation.
- OPC UA Server and Client.
- Optional CODESYS V3 runtime with choice of EtherCAT, Profinet, Ethernet IP and Powerlink.

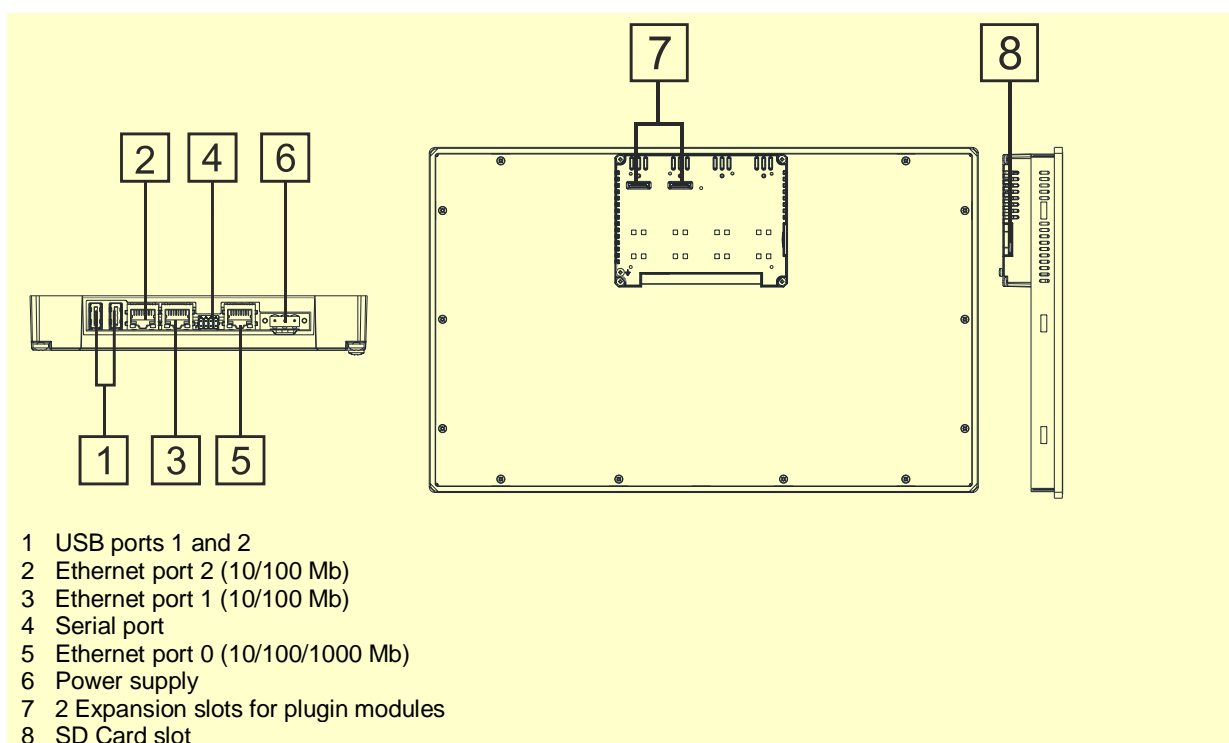
Technical Data

Display Type Resolution Active display area Colors Backlight Brightness Dimming	TFT 1920x1080, full HD 21.5" diagonal 16M LED 300 Cd/m ² typ. Dimmable to 0%	Environment Conditions Operating temperature Storage temperature Operating and storage humidity Protection class	-20° to +60 °C (vertical installation) Plug-in modules and USB devices may limit max temperature to +50 °C. -20 to +70 °C 5 – 85 % RH, non-condensing IP66 (front) IP20 (rear)
System Resources CPU Operating System Flash RAM Real Time Clock RTC backup Buzzer	ARM Cortex-A9 quad core 800 MHz Linux RT 8 GB 2 GB Yes Yes, rechargeable battery Yes	Dimensions and weight Faceplate LxH Cutout AxB Depth D+T Weight	552x347 mm 541x336 mm 56+8.5 mm 6.1 Kg
Operator Interface Touchscreen LED indicators	Projected capacitive Multitouch, 2-points gestures -	Approvals CE	Emission EN 61000-6-4 Immunity EN 61000-6-2 for installation in industrial environments
Interface Ethernet port 0 Ethernet port 1 Ethernet port 2 USB port 1 USB port 2 Serial port 1 SD card Expansion	10/100/1000 10/100 10/100 Host V2.0, max. 500 mA Host V2.0, max. 500 mA RS-232, RS-485, RS-422, software configurable. Max 3 serial ports using plug-in modules. Yes 2 slots for plug-in modules		
Ratings Power supply voltage Current consumption Input protection Battery	24 Vdc (10 to 32 Vdc) 1.7 A at 24Vdc(max.) Electronic Rechargeable Lithium battery, not user-replaceable		

Dimensions



Connections



Ordering Information

Model	Part Number	Description
eX721	+EX721U5P1	21.5" widescreen TFT color with multitouch projected capacitive touchscreen. 3 Ethernet ports, 1 serial port, 2 USB ports. JMobile runtime.

ptn0593

Ver. 1.1

Copyright © 2016 EXOR International S.p.A. – Verona, Italy

Subject to change without notice

The information contained in this document is provided for informational purposes only. While efforts were made to verify the accuracy of the information contained in this documentation, it is provided "as is" without warranty of any kind.

www.exorint.com