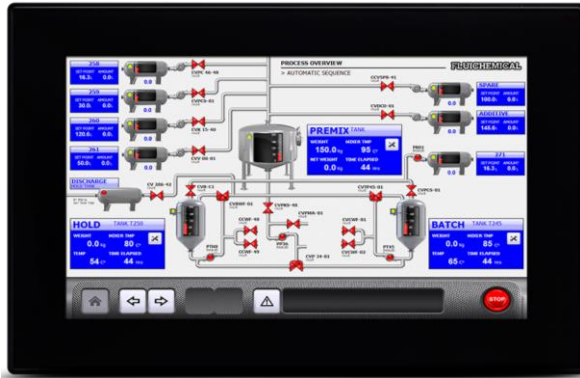


eX715

15.6" TFT color with multitouch projected capacitive touchscreen. 3 Ethernet ports, 1 serial port, 2 USB ports. JMobile runtime.



- 15.6" TFT color display, resolution 1366x768 pixel, 16M colors. Dimmable LED backlight
- Projected capacitive touchscreen. True glass design. Multitouch operation
- 3 Ethernet ports
- SD Card slot
- 2 Plug-in modules for system expansion

Product overview

eX Series 700 HMI products combine state-of-the-art connectivity features and top performance in a great design. Products have been designed as IoT edge devices with the combination of a powerful controller with networking capability and outstanding communication options including client/server OPC UA. They are the ideal choice for all demanding IoT edge applications in factory, marine and building automation.

The glass projected capacitive touchscreen and the brilliant 15.6" widescreen display with resolution of 1366x768 guarantee great optical performance; with the support of multitouch gesture programming they can create the most natural human interfaces.

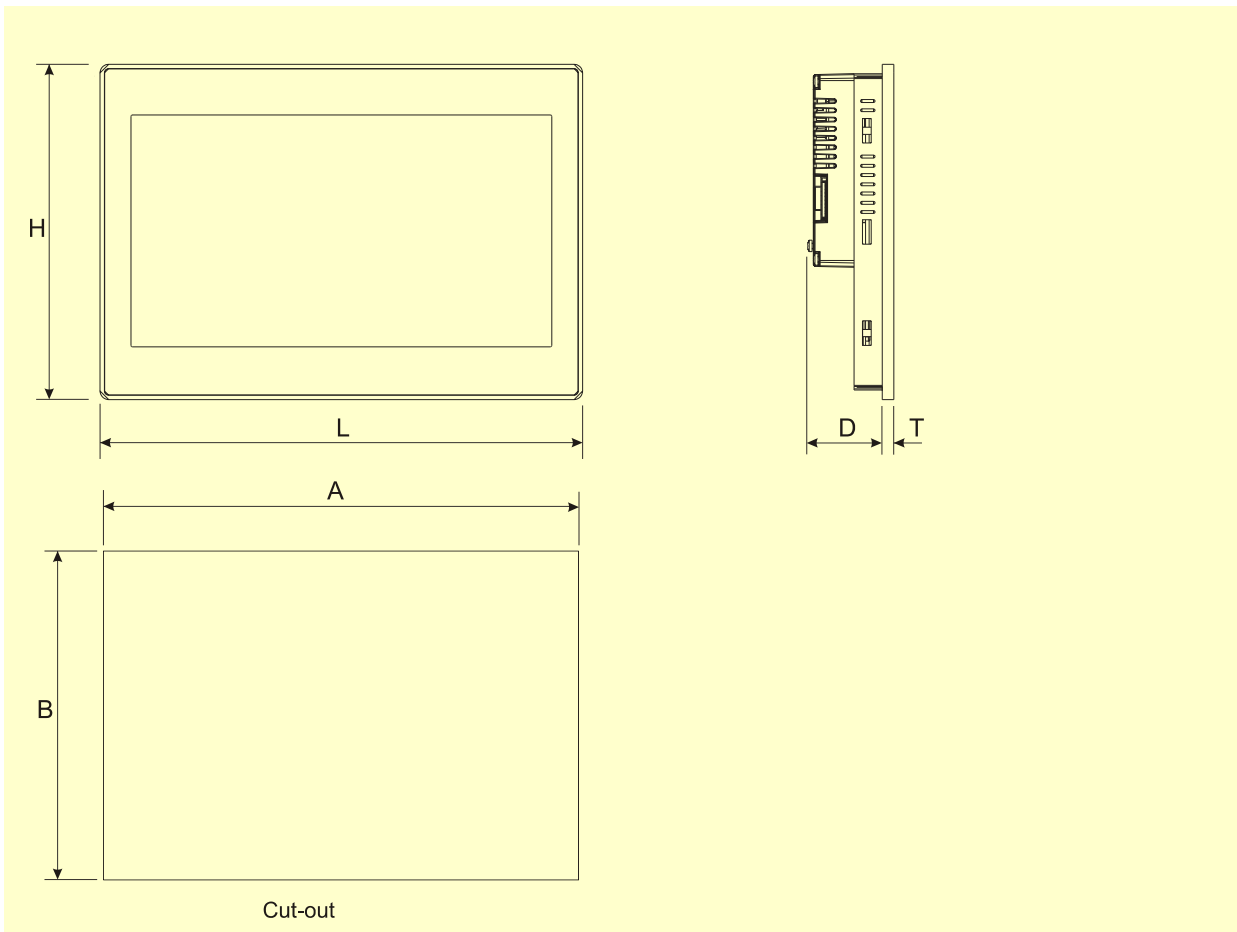
eX Series 700 HMI products have been designed to run the JMobile software.

- JMobile runtime included.
- Requires JMobile V2.5 or higher.
- Supports JMcloud secure connectivity with full network separation.
- OPC UA Server and Client.
- Optional CODESYS V3 runtime with choice of EtherCAT, Profinet, Ethernet IP and Powerlink.

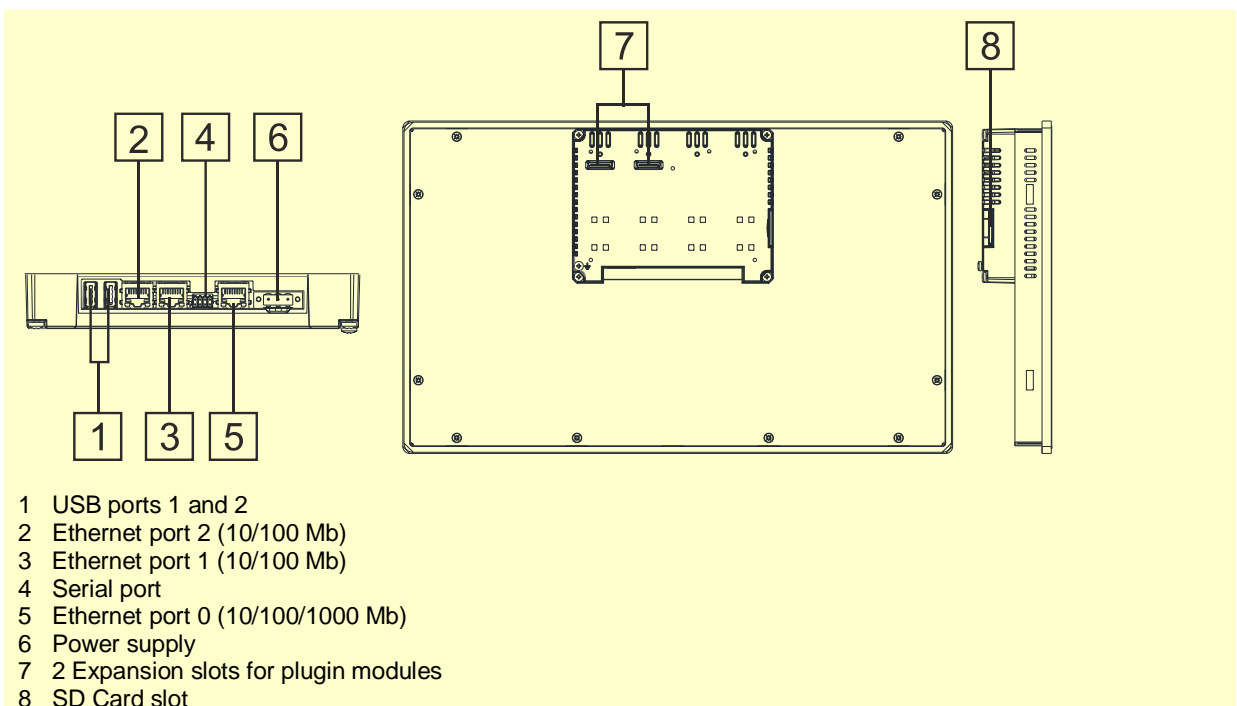
Technical Data

Display Type TFT Resolution 1366x768, HD Active display area 15.6" diagonal Colors 16M Backlight LED Brightness 300 Cd/m ² typ. Dimming Dimmable to 0%		Environment Conditions Operating temperature -20° to +60 °C (vertical installation) Plug-in modules and USB devices may limit max temperature to +50 °C. Storage temperature -20 to +70 °C Operating and storage humidity 5 – 85 % RH, non-condensing Protection class IP66 (front) IP20 (rear)	
System Resources CPU ARM Cortex-A9 quad core 800 MHz Operating System Linux RT Flash 8 GB RAM 2 GB Real Time Clock Yes RTC backup Yes, rechargeable battery Buzzer Yes		Dimensions and weight Faceplate LxH 422x267 mm (16.6x10.5") Cutout AxB 411x256 mm (16.18x10") Depth D+T 56+8 mm (2.20+0.33") Weight 4.1 Kg	
Operator Interface Touchscreen Projected capacitive Multitouch, 2-points gestures LED indicators -		Approvals CE Emission EN 61000-6-4 Immunity EN 61000-6-2 for installation in industrial environments	
Interface Ethernet port 0 10/100/1000 Ethernet port 1 10/100 Ethernet port 2 10/100 USB port 1 Host V2.0, max. 500 mA USB port 2 Host V2.0, max. 500 mA Serial port 1 RS-232, RS-485, RS-422, software configurable. Max 3 serial ports using plug-in modules. SD card Yes Expansion 2 slots for plug-in modules			
Ratings Power supply voltage 24 Vdc (10 to 32 Vdc) Current consumption 1.2 A at 24Vdc(max.) Input protection Electronic Battery Rechargeable Lithium battery, not user-replaceable			

Dimensions



Connections



Ordering Information

Model	Part Number	Description
eX715	+EX715U5P1	15.6" widescreen TFT color with multitouch projected capacitive touchscreen. 3 Ethernet ports, 1 serial port, 2 USB ports. JMobile runtime.

ptn0592

Ver. 1.1

Copyright © 2016 EXOR International S.p.A. – Verona, Italy

Subject to change without notice

The information contained in this document is provided for informational purposes only. While efforts were made to verify the accuracy of the information contained in this documentation, it is provided "as is" without warranty of any kind.

www.exorint.com