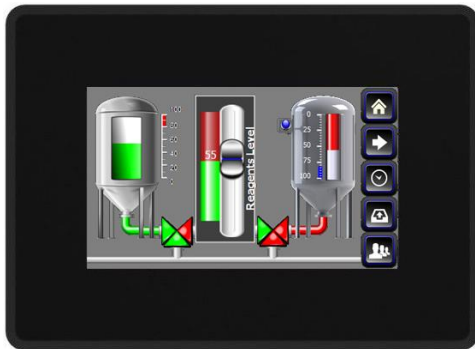


# eSMART04

The eSMART Series HMI products combine state-of-the-art features and top performance with an outstanding design. They have been designed to offer an outstanding price/performance ratio for challenging applications. They are the ideal choice for HMI applications including factory and building automation.

eSMART04 features a bright 4.3" TFT widescreen (16:9) display with a fully dimmable LED backlight.



- 4.3" TFT color display, LED backlight
- 480x272 pixel resolution, 64K colors
- Resistive touchscreen
- Ethernet port
- USB port

## Highlights

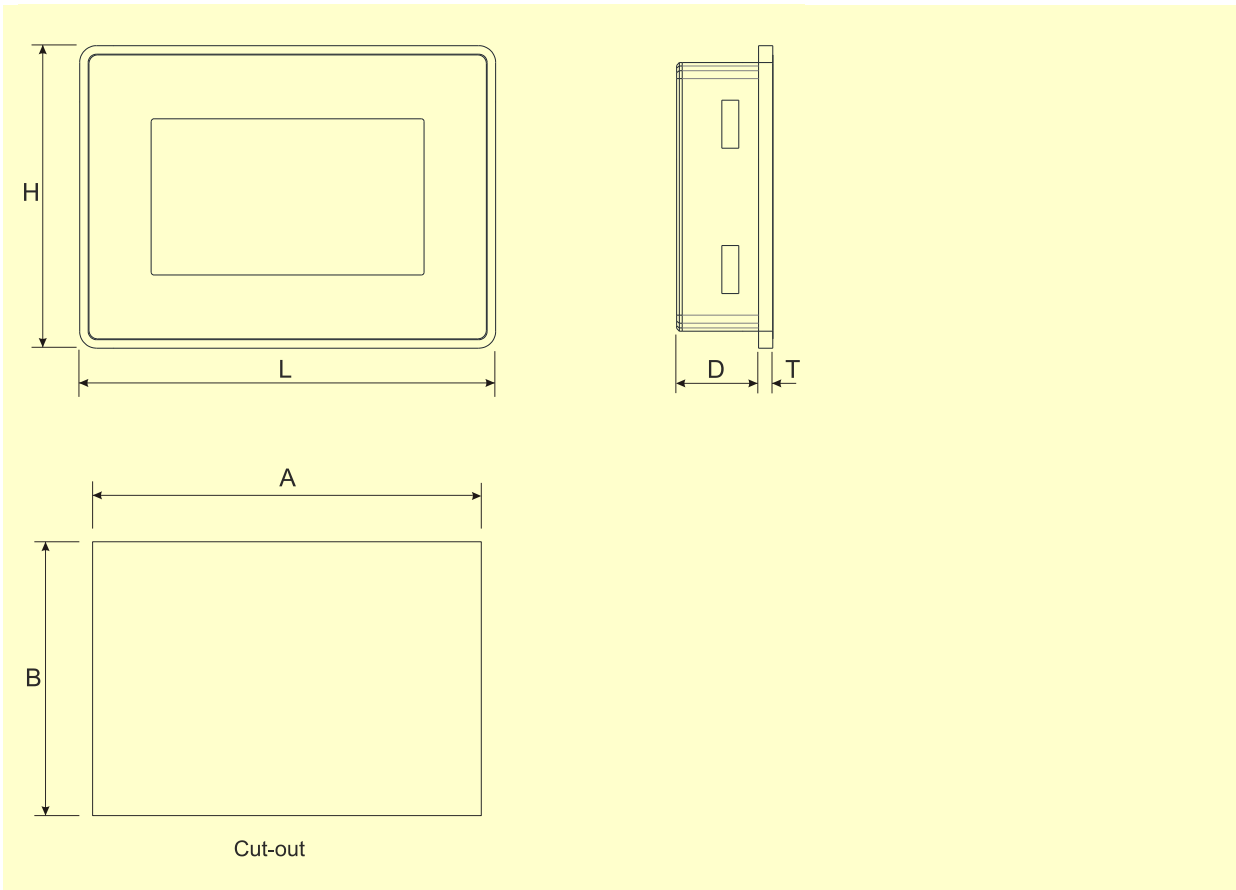
The eSMART HMI products have been designed to run the JMobile software.

- Compatible with JMobileStudio.
- Full vector graphic support. Native support of SVG graphic objects, transparency and alpha blending.
- Screen object dynamics: control visibility and transparency, move, resize, rotate any object on screen. Change properties of basic and complex objects.
- Multilanguage applications with TrueType fonts. Easily create, install and maintain applications in multiple languages to meet global requirements.
- Data display in numerical, text, bargraph, analog gauges and graphic image formats.
- Rich set of state-of-the-art HMI features: data acquisition and logging, trend presentation, alarm handling, scheduler and timed actions (daily and weekly schedulers, exception dates), recipes, security and user management, e-mail and RSS feeds.
- Wide selection of communication drivers available with multiple-driver communication capability.
- Remote monitoring and control with Client-Server functionality.
- Off-line and on-line simulation with JMobile Studio.
- Powerful scripting language for automating HMI applications. Efficient script debugger improves productivity in application development.
- Rich gallery of objects and symbols.

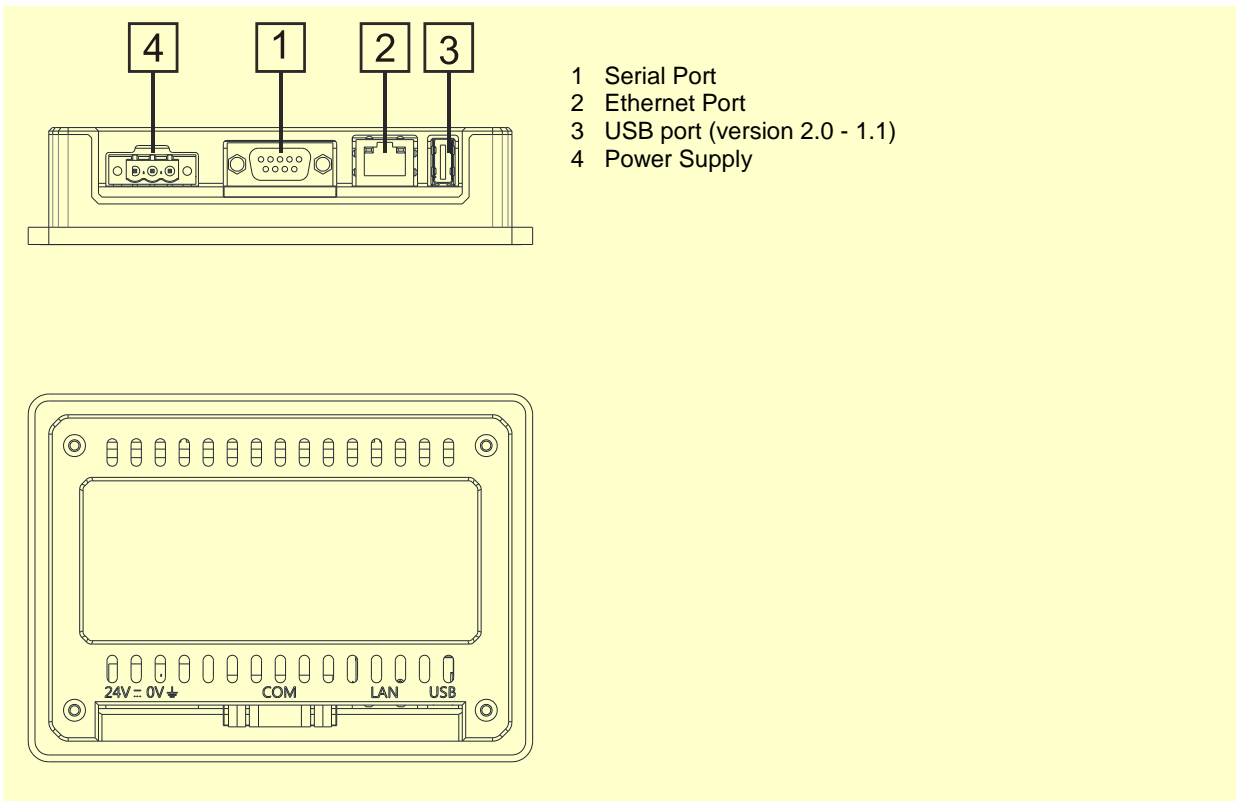
## Technical Data

<b>Display</b> Type TFT Resolution 480x272 Active display area 4.3" diagonal Colors 64K Backlight LED Brightness 200 Cd/m <sup>2</sup> typ. Dimming Yes		Fuse Automatic Weight Approx 0.4 Kg
<b>System Resources</b> CPU ARM Cortex A8 300 MHz Operating System Linux 3.12 RAM 256 MB Flash 2 GB Application memory 60 MB Real Time Clock Yes RTC backup Supercapacitor Buzzer Yes		<b>Environmental Conditions</b> Operating temperature 0 to 50 °C (vertical installation) Storage temperature -20 to +70 °C Operating and storage humidity 5 – 85 % relative humidity, non-condensing Protection class Front: IP66, Type 2 and 4X Rear: IP20
<b>User Interface</b> Touchscreen Resistive		<b>Dimensions</b> Faceplate LxH 147x107 mm (5.78x4.21") Cutout AxB 136x96 mm (5.35x3.78") Depth D+T 29+5 mm (1,14+0.19")
<b>Interface</b> Ethernet 1x 10/100 Mbit USB 1x Host V2.0, max. 500 mA Serial 1x RS-232/RS-485/RS-422, software configurable		<b>Approvals</b> CE Emission EN 61000-6-4 Immunity EN 61000-6-2 for installation in industrial environments Emission EN 61000-6-3 Immunity EN 61000-6-1, for installation in residential environments
<b>Ratings</b> Power supply voltage 24 Vdc (18 to 32 Vdc) Current consumption 0.25 A max. at 24Vdc		UL cULus

**Dimensions**



**Connections**



## Ordering Information

Model	Part Number	Description
eSMART04	+ESMA04U301	4" widescreen TFT color touchscreen with Ethernet and USB interfaces. JMobile runtime.

---

**ptn0521**

**Ver. 1.2**

**Copyright © 2015 Exor International S.p.A. – Verona, Italy**

Subject to change without notice

The information contained in this document is provided for informational purposes only. While efforts were made to verify the accuracy of the information contained in this documentation, it is provided "as is" without warranty of any kind.

[www.exorint.net](http://www.exorint.net)